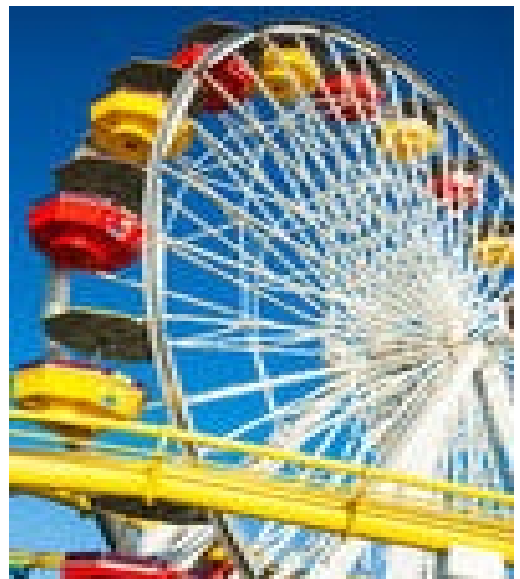


128th
Hitz fm 93.9
BUNDABERG
SHOW
2022



WEDNESDAY 25th May
THURSDAY 26th May
FRIDAY 27th May

Section 9
Education



PRIVACY STATEMENT

The Information provided by Exhibitors Is used by the Queensland Chamber of Agriculture Associations Inc and the Bundaberg A.P. & I, Society Inc. to organize , process and conduct competitions at the Bundaberg AP & I Society Inc show. By entering such competitions, you consent to your personal Information being used for this purpose Including this Information being made available to sponsors, breed Associations, the media, the public, promotional purposes. archival purposes, published in publications or as It Is otherwise required by Law.

All exhibitors have the right to access and alter personal information concerning themselves in the terms of the Privacy Act. This can be done by contacting the QCAS CEO or by writing to QCAS

WORKPLACE HEALTH AND SAFETY

All Queensland Chamber of Agriculture Societies Inc. affiliated Association Showgrounds are designated workplaces within the meaning of the Workplace Health and Safety Act 2011 and exhibitors/competitors are required to ensure that they and all persons under their direction or control, including their contractors or subcontractors, comply with all requirements of the Act. The Queensland Chamber of Agriculture Associations Inc hold each exhibitor responsible to discharge its obligations to provide and maintain a safe place and system of work during occupation by the exhibitor/competitor of any area of the affiliated Agricultural Associations Showgrounds/Precinct.

Each exhibitor/competitor will assess the risk to themselves, staff, volunteers, family, other exhibitors, Agricultural Society staff, show visitors, children and any person foreseeably affected by the presentation of their exhibit.

Exhibits will only be held and handled by competent persons whose experience Is known to the Exhibitor/ competitor.

The exhibitors/competitors are advised that the use of Primus Stoves, any heating or lighting appliances of a like character, or any naked light, Is strictly prohibited in Pavilions/stables/barns.

Any exhibitors/competitors Intending to bring electrical equipment to the Showgrounds/Precinct will be required to ensure that such equipment Is fitted with a residual current protection and that all electrical lead s, tools and appliances have been Inspected by a licensed electrical contractor and are currently tagged. The use of double adaptors is prohibited, and all power boards must also be tested and tagged.

All exhibitors/competitors will comply with the requirements of the ACT end Its Regulations and Standards In every respect. This Is essential for the safety of all exhibitors/competitors and the general public. The ACT Imposes very severe penalties in the event of noncompliance with its provisions. Any exhibitors/competitors who do not comply will not be allowed to exhibit at "Queensland Chamber of Agriculture Association. affiliated Shows".

BUNDABERG SHOW

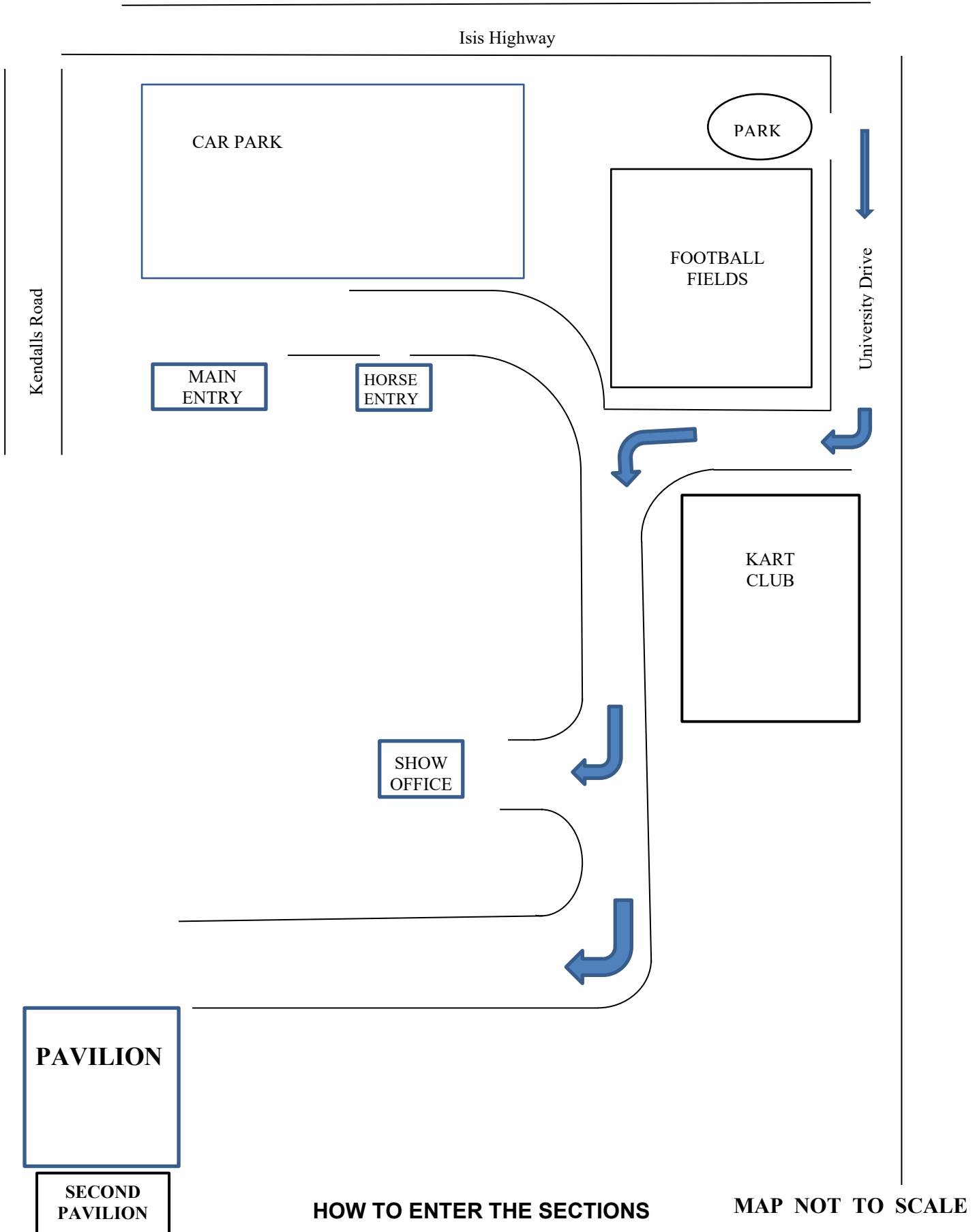
GATE ENTRY FEES:

ADULT:-----\$20.00
STUDENT 6 – 17 yrs:-----\$10.00
CONCESSION:-----\$10.00
OVER 75 YEARS :-----FREE
UNDER 6 YEARS:-----FREE

PRE-PURCHASE TICKET ONLY

FAMILY ONE DAY PASS \$50.00
(Available until Tuesday 24th May 2022)
(Includes 2 Adult & 2 Children 15 yrs & under)

Bundaberg Airport



HOW TO ENTER THE SECTIONS

MAP NOT TO SCALE

FILL OUT ENTRY FORMS

All entries must be:

- ❖ On Official Entry Forms
- ❖ On SEPARATE Entry Forms for Each Section (NOT CLASS)
- ❖ Fully completed
- ❖ Accompanied by Entry Fees (Refer Sections)
- ❖ Handcraft, Photography and Fruit & Vegetables have separate entry forms

ENTRIES WILL NOT BE ACCEPTED

- ❖ Without entry fees
- ❖ Over the telephone
- ❖ After closing date

POST ENTRY FORMS TO

The Secretary
PO Box 915
BUNDABERG QLD 4670

OR

DELIVER ENTRY FORMS TO

Bundaberg Show Society Office
via University Drive, Bundaberg
Enquiries – Phone 07 4155 0802

Delivery of entry forms : April 2022 – Mon, 9am – 1pm .
May 2022 – Mon – Fri, 9am -5pm.

YOU WILL RECEIVE

- ❖ Class Ticket stating Section, Class and Entry No.
- ❖ Receipt

DELIVER EXHIBITS

- ❖ Accompanied by Class Ticket (ATTACHED)
(This is proof of Entry in a Class)
- ❖ To designated part of Showground by due date and time.

PLEASE REFER TO EACH SECTION FOR CLOSING, DELIVERY & COLLECTION
Prize money to be collected from the Show Office during the Show from 2pm Wednesday, 25th May 2022 to 2pm Saturday, 28th May 2022. Prize Money NOT COLLECTED will be deemed a donation and returned to Society Funds.

Section 9
EDUCATION

ENTRY FEES

FREE ENTRY

PRIZES TO WINNING SCHOOLS

FIRST PRIZE - \$150
SECOND PRIZE - \$100
THIRD PRIZE - \$50

TROPHY

The Judith Koczan Memorial Award

A "Perpetual Trophy" has been donated to this Section for the Champion School.



HIGHLY COMMENDED PRIZES
WILL BE DONATED BY
McDONALD'S



Conditions of Entry
Each School will choose a theme based on:
"BUNDABERG TURTLES"

Prep – Year 2

Draw, colour, paint or collage "Bundaberg Turtles"

Year 3 – Year 4

OPTION 1 – Illustrate Bundaberg Turtles – Mon Repos Sanctuary

OPTION 2 – Handwriting - "Bundaberg Turtles – Mon Repos Sanctuary"

Year 5 – Year 6

Design a Poster. "Bundaberg Turtles- Mon Repos Sanctuary.

Include written text and illustrations and/or photos.

Each school entry to have some work from each of the above sections.

Please clearly name and grade each student's work on the front of each piece on the bottom right hand corner. Thank you.

- **Each School has been designated a space of 2.1m x 1.2m – landscape** - on which students from each class can enter, choosing from the sections above. Teachers can then pick which items are to be displayed at the Show. **All displays must be hung on boards provided, no tables will be available. Representatives from each school to hang their own school's work.**
- The section will be judged on the overall display from all classes
- Prize money will be awarded to the School.
- Please phone the Show Office on 4155 0802 to advise of your school's entry to ensure adequate space is provided.
- **ENTRIES TO BE DELIVERED AND DISPLAYED IN MAIN PAVILION ON SUNDAY 22th or MONDAY 23th MAY FROM 9am TO 5pm BY SCHOOL REPRESENTATIVE.** Exhibits *must* be collected from the PAVILION by Teacher / Representative, on Saturday 1st June between 8 and 10am.



ENTRY FORM

BUNDABERG A.P. & I SOCIETY INC
THE SECRETARY, SHOWGROUNDS OFFICE
Via UNIVERSITY DRIVE, BUNDABERG QLD 4670

