

2026
132nd
Hitz fm 93.9
BUNDABERG
SHOW

WEDNESDAY 27th May
THURSDAY 28th May
FRIDAY 29th May



SECTION 24
Crafty Creations

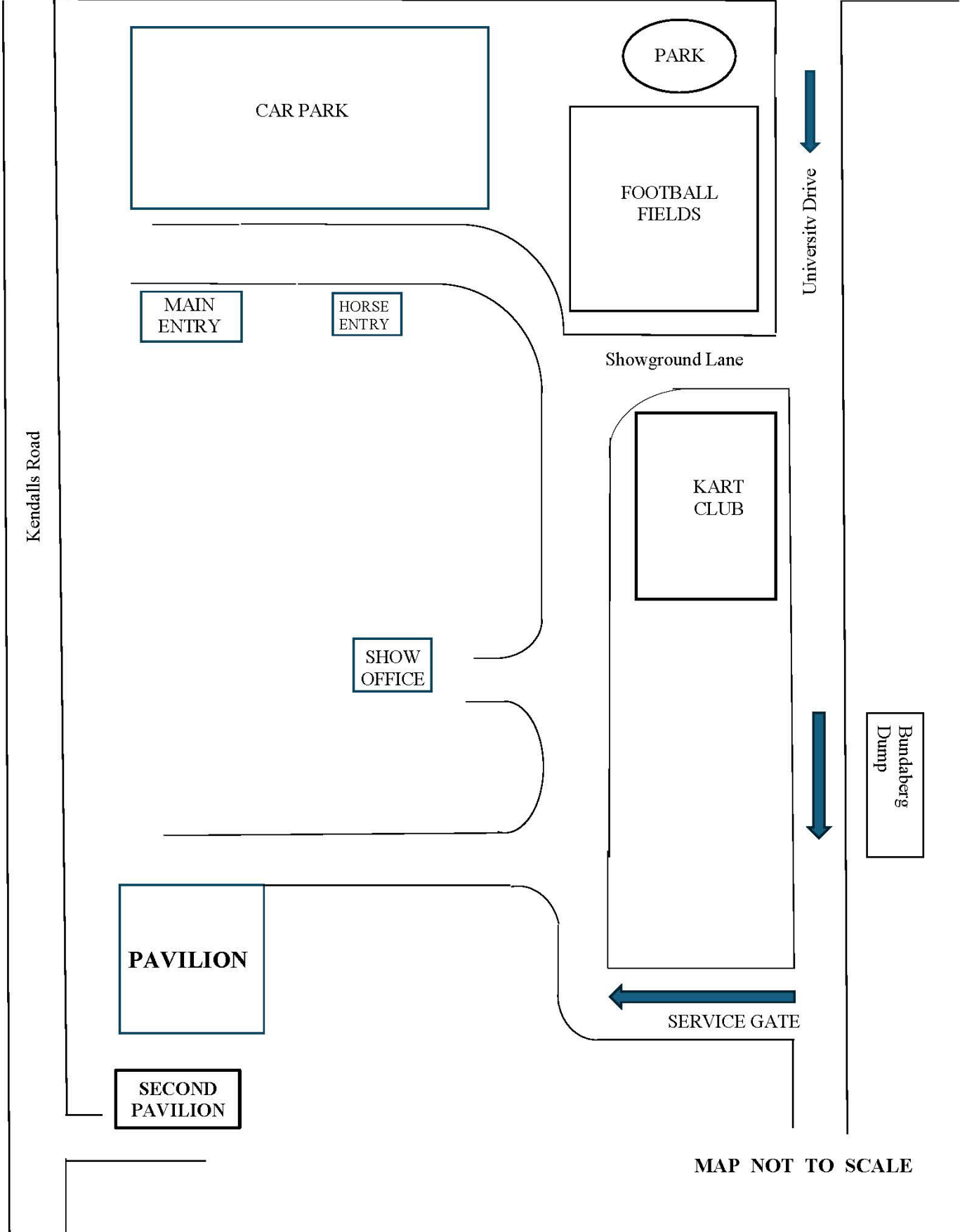


AIRPORT 

← Bundaberg

Isis Highway

Childers/Brisbane →



MAP NOT TO SCALE



PRIVACY STATEMENT

The Information provided by Exhibitors Is used by the Queensland Chamber of Agriculture Associations Inc and the Bundaberg A.P. & I, Society Inc. to organize , process and conduct competitions at the Bundaberg AP & I Society Inc show. By entering such competitions, you consent to your personal Information being used for this purpose Including this Information being made available to sponsors, breed Associations, the media, the public, promotional purposes. archival purposes, published in publications or as It Is otherwise required by Law. All exhibitors have the right to access and alter personal information concerning themselves in the terms of the Privacy Act. This can be done by contacting the QCAS CEO or by writing to QCAS

WORKPLACE HEALTH AND SAFETY

All Queensland Chamber of Agriculture Societies Inc. affiliated Association Showgrounds are designated workplaces within the meaning of the

Workplace Health and Safety Act 2011 and exhibitors/competitors are required to ensure that they and all persons under their direction or control, including their contractors or subcontractors, comply with all requirements of the Act. The Queensland Chamber of Agriculture Associations Inc hold each exhibitor responsible to discharge Its obligations to provide and maintain a safe place and system of work during occupation by the exhibitor/competitor of any area of the affiliated Agricultural Associations Showgrounds/Precinct

Each exhibitor/competitor will assess the risk to themselves, staff, volunteers, family, other exhibitors, Agricultural Society staff, show visitors, children and any person foreseeably affected by the presentation of their exhibit.

Exhibits will only be held and handled by competent persons whose experience Is known to the Exhibitor/competitor.

The exhibitors/competitors are advised that the use of Primus Stoves, any heating or lighting appliances of a like character, or any naked light, Is strictly prohibited in Pavilions/stables/barns.

Any exhibitors/competitors Intending to bring electrical equipment to the Showgrounds/Precinct will be required to ensure that such equipment Is fitted with a residual current protection and that all electrical lead s, tools and appliances have been Inspected by a licensed electrical contractor and are currently tagged. The use of double adaptors is prohibited, and all power boards must also be tested and tagged.

All exhibitors/competitors will comply with the requirements of the ACT end Its Regulations and Standards In every respect. This Is essential for the safety of all exhibitors/competitors and the general public. The ACT Imposes very severe penalties in the event of noncompliance with its provisions. Any exhibitors/competitors who do not comply will not be allowed to exhibit at "Queensland Chamber of Agriculture Association. affiliated Shows".

BUNDABERG SHOW

GATE ENTRY FEES:

ADULT:-----\$20.00

STUDENT: 6 – 17 yrs.-----\$10.00

CONCESSION:-----\$10.00

OVER 75 YEARS :-----FREE

UNDER 6 YEARS:-----FREE

PRE-PURCHASE TICKET ONLY

FAMILY ONE DAY PASS \$50.00

(Available until Tuesday 26th May)

(Includes 2 Adult & 2 Children 17 yrs.& under

HOW TO ENTER THE SECTIONS

FILL OUT ENTRY FORMS

All entries must be:

- ❖ On Official Entry Forms
- ❖ On SEPARATE Entry Forms for Each Section (NOT CLASS)
- ❖ Fully completed
- ❖ Accompanied by Entry Fees (Refer Sections)
- ❖ Handcraft, Photography and Fruit & Vegetables have separate entry forms

ENTRIES WILL NOT BE ACCEPTED

- ❖ Without entry fees
- ❖ Over the telephone
- ❖ After closing date

DELIVER ENTRY FORMS TO
Bundaberg Show Society Office
via University Drive, Bundaberg
Enquiries – Phone 07 4138 7605

Delivery of entry forms: APRIL – Mon Wed & Fri 9am – 1pm
MAY – Mon - Fri 9am – 4pm



YOU WILL RECEIVE

- ❖ Class Ticket stating Section, Class and Entry No.
- ❖ Receipt

DELIVER EXHIBITS

- ❖ Accompanied by Class Ticket (ATTACHED)
(This is proof of Entry in a Class)
- ❖ To designated part of Showground by due date and time.

PLEASE REFER TO EACH SECTION FOR CLOSING, DELIVERY & COLLECTION

Prize money to be collected from the Show Office during the Show from 2pm Wednesday 27th May to 2pm Saturday, 30th May. Office hours 9.00 – 4.00. Prize money NOT COLLECTED will be deemed a donation and returned to Society's Funds. All prize money/entry fees contain GST which is payable by all competitors whether registered for GST or not registered for GST.





SECTION 24 CRAFTY CREATIONS

CHIEF STEWARD: Marg Faulkner MOB 0418 770 852

ALL PRIZE MONEY: 1ST \$10.00, 2ND \$6.00, 3rd \$4.00

Entry Fee \$2.00

No refunds if change of mind or unable to attend.

ENTRIES CLOSE: FRIDAY 22nd MAY at 4.00pm

ENTRIES TO BE DELIVERED TO THE MAIN PAVILLION via UNIVERSITY DRIVE

SATURDAY: 23th May Between 9.00am. & 12.00pm.

EXHIBITS TO BE COLLECTED

SATURDAY 30th May Between 9.00 a.m. & 11.00 a.m.

CLASS TICKET TEAR OFF MUST BE PRESENTED TO COLLECT ITEMS.

Items not collected will be destroyed.



PLEASE READ RULES

Before Exhibits are taken to the Stewards

The white card must be attached to the front of your exhibit.

Please attach by tacking or with small safety pins from under the item, please do not use ordinary sewing pins or staples, they could damage work or another competitors exhibit.

ALL COMPETITORS:

1. Limit of two (2) entries per person, per class.
2. A Judge is not compelled to give a prize. All prizes are at the Judge's discretion.
3. Entries must be completed within 18 months of the first day of the Show, and not have been exhibited in any previous Bundaberg Show.
4. Item never used, or garment never worn, **except** for Bridesmaids, Flower Girls dresses.
5. Soiled items **WILL NOT** be accepted.
6. No exhibit can be entered into more than one class.
7. If an exhibit has more than one article, please present on cardboard that is no more than 2cm bigger than the item, pinned from underneath, not on top. Use minimal amount of safety pins.
8. All exhibits must be Hand Worked Unless otherwise stated.
9. All work must be the work of the person whose name appears on the entry form.

CHILDREN'S ENTRIES:

Date of birth of the child on the top half of the white card.



SPECIAL SCHOOL DIVISION
Restricted tom Intellectually and or Physically Disabled

- 24/1 ANY OTHER CRAFT – Knitting, Crochet, Sewing – Any Article - Max Size 600mmX600mm.
24/2 COLLAGE OF YOUR FAVOURITE THING Max Size A3



SPECIAL NEEDS DIVISION
Restricted to Intellectually and or Physically Disabled

- 24/3 ANY OTHER CRAFT– Knitting, Crochet, Sewing. Minimum glue Max Size 600 x 600 Mixed medium no larger than 220mm x 220mm



CHAMPION SPECIAL SCHOOL/ SPECIAL NEEDS DIVISION
Selected from 24/1 – 24/3 SOCIETY'S CHAMPION AWARD



PRIMARY SCHOOL DIVISION

Please state DATE OF BIRTH ON THE TOP OF THE WHITE CARD

(Please attach small items on to cardboard at least 2cm larger than the item)

- 24/4 NOVELTY ARTICLE - Soft Craft
24/5 ANY BEADED ARTICLE – i.e.: Christmas Decoration, Necklace, Bracelet etc.
24/6 ANY ARTICLE – Knitting, Crochet
24/7 ANY ARTICLE – Hand or Machine Made
24/8 ANY ARTICLE – Using Any Type of Loom Max Size 300X300.

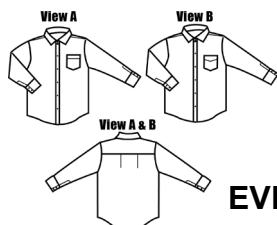
CHAMPION PRIMARY SCHOOL DIVISION
SOCIETY'S CHAMPION AWARD



HIGH SCHOOL DIVISION

Please state DATE OF BIRTH ON THE TOP OF THE WHITE CARD

- 24/9 ANY ARTICLE – Machine Sewing i.e.: Patchwork, Shirt, Blouse, & Bag Etc.
24/10 ANY ARTICLE – Knitting or Crochet
24/11 ANY OTHER CRAFT NOT MENTIONED – Beadwork, Jewellery, Needlework Etc.



CHAMPION HIGH SCHOOL DIVISION
SOCIETY'S CHAMPION AWARD



EVERY CLASS: ONLY TWO (2) ITEMS PER PERSON PER CLASS

HAND KNITTING

- 24/12 ADULT CLOTHING – Jumper, Top, Shorts, Dress
24/13 CHILDREN & BABY CLOTHING – Jumper, Top, Jumpsuit, Babywear
24/14 SLIPPERS, SOCKS, BEANIE, GLOVES
24/15 KNITTED LACE – ANY YARN MAX 3PLY TO BE USED – No nylon lace to be used.
24/16 ANY KNITTED ARTICLE – Not already covered in Knitting Section
24/17 SHAWL, SCARF, SHRUG

24/18 KNITTED NOVELTY – Max Size 300mm X 300mm

24/19 TOY, DOLL (Any)

24/20 HOMEWARES – Pillow, Cushion, Table runner, Tablecloth, Basket/Container, tea cosy, (No Washers)



CHAMPION HAND KNITTING SOCIETY'S CHAMPION AWARD

CROCHET

Please present on contrasting coloured cardboard this will show off your work.
Cardboard to be no more than 2cm bigger than the item.

PLEASE ATTACH IN ONLY A FEW PLACES NOT ALL AROUND.

24/21 ANY CROCHET ARTICLE – FINE 40 and OVER (No Washers)

24/22 ANY CROCHET ARTICLE – HEAVY 30, 20, 10 (No Washers)

24/23 ADULT CLOTHING – Jumper, Top, Shorts, Dress etc

24/24 TABLE RUNNER

24/25 CREATIVE CROCHET – ANY ARTICLE

24/26 CHILDREN & BABY CLOTHING – Jumper, Top, Booties, Socks (Pinned together) Jumpsuit, Babywear

24/27 SLIPPERS, SOCKS, BEANIE, GLOVES

24/28 SHAWL, SCARF, SHRUG

24/29 TOY, AMIGURUMI, DOLL (Any) – No pairs (Single item only)

24/30 KNEE RUG, THROW RUG or RUG TO BE USED WITH A WHEELCHAIR – 1.5m x 1.5m (Max)

24/31 RUG – Max Size Queen Size

24/32 ARTICLE with CROCHET EDGE or CORNER – Handkerchief - Ironed flat

24/33 ARTICLE with CROCHET EDGE or CORNER – Tea Towel, Washer

24/34 ANY CROCHET ARTICLE – Not already covered in the crochet i.e.: Granny Squares(300mmx300mm), Bag, Jewellery

24/35 NOVELTY – Max Size 300mm X 300mm A NOVELTY IS SOMETHING THAT HAS LITTLE OR NO USE

CHAMPION CROCHET SOCIETY'S CHAMPION AWARD

TATTING, BOBBIN LACE, NEEDLE LACE

24/36 TATTING – ANY ARTICLE

24/37 ANY ARTICLE – BOBBIN LACE

24/38 ANY ARTICLE – NEEDLE LACE



BEADWORK

24/39 ANY BEADED ARTICLE – i.e.: Christmas Decorations, No Jewellery

24/40 BEADED JEWELLERY – Necklace, Bracelet, Brooch or Earrings

24/41 ANY BEADED ARTICLE – i.e.: Belts, Collars, Handbags



HAND EMBROIDERY

- 24/42 LONG STITCH TAPESTRY – Any Article
- 24/43 HARDANGER – PULLED THREAD – DRAWN THREAD – Any Article
- 24/44 EVENWEAVE MATERIAL – Counted Thread, Florentine, Myreska
- 24/45 CROSS STITCH / ASSISI – Any Article – Max Size 600mm X 600mm FRAMED
- 24/46 RED, BLACK, BLUE, or WHITE – Using Only One Colour
- 24/47 THREAD PAINTING – Any Article – Using Cotton, Silk or Wool
- 24/48 GOLD / SILVER WORK – Any Article – Using Gold, Silver or Gilt Metallic Threads
- 24/49 ANY OTHER EMBROIDERED ARTICLE – Not Already Covered in Hand Embroidery
- 24/50 HAND EMBROIDERED GIFT or NOVELTY
- 24/51 SASHIKO – Any Item – 300mm x 300mm

CHAMPION NEEDLECRAFT, TATTING, BOBBIN LACE, NEEDLE LACE, BEADWORK

24/36 – 24/51 SOCIETY'S CHAMPION AWARD

PATCHWORK / QUILTING

- 24/52 ANY ARTICLE OF PATCHWORK / QUILTING – Max Size Queen Size
- 24/53 WALL HANGING – Max Size 600mm X 600mm
- 24/54 PATCHWORK TABLE RUNNER or PLACEMAT
- 24/55 APPLIQUE – HAND SEWN



CHAMPION PATCHWORK / QUILTING SOCIETY'S CHAMPION AWARD

MISCELLANEOUS

- 24/56 ANY OTHER SOFT CRAFT – NOT ALREADY MENTIONED IN SCHEDULE
- 24/57 FROM SOMETHING OLD TO SOMETHING NEW – Any Article i.e. Old jumper made into a bag, old dress into a pillowcase Etc. Max Size 600mm X 600mm A photo of the old item.
- 24/58 GREETING CARD – Made from mostly material - Handmade – Stamping, Embossing, Punches
- 24/59 3D ITEM – Made out of Card 400 x 400mm or mixed medium 220 x 220mm
- 24/60 COAT HANGER – Any Medium
- 24/61 CHRISTMAS ITEM – Max Size 600mm X 600mm
- 24/62 ANY ARTICLE MACHINE EMBROIDERED – Max Size 600mm X 600mm
- 24/63 THREAD PAINTING – Any Article – Machine Worked
- 24/64 FABRIC PAINTING – ANY ARTICLE ON FABRIC – Using Fabric Paints
- 24/65 DIAMOND DOT – 300mm x 300mm – Framed
- 24/66 DIAMOND DOT – Any Article (1 Item) – Caps, Hats (**No** recycled items i.e. Skulls)



SEWING AND TOYS

- 24/67 CHILD/INFANT OUTFIT – Machine Made for Child up to 10 yrs.
- 24/68 ANY GARMENT – Machine Made for 11yrs. to adult.
- 24/69 MACHINE MADE DOLL – DRESSED IN MACHINE MADE CLOTHES
- 24/70 BEAR – Any Medium – No Lavender
- 24/71 MACHINE MADE ARTICLE – Not Already Covered i.e. Shopping Bag, Dolls Clothes.
- 24/72 ANY TOY – Not Already Covered – No Bears or Dolls
- 24/73 FABRIC NOVELTY – Max Size 300mmx 300mm



24/74 MACHINE APPLIQUE – ANY ARTICLE – Max Size 600mm X 600mm

MACRAME

24/75 WALL HANGING – Max size 1.5m (Excluding hanger)

24/76 HOMEWARES – Pillow, Cushion, Table Runner, Tablecloth, Basket/Container, Trivet

24/77 ACCESSORIES – Key Chain, Jewellery, Bookmark

24/78 ANY ARTICLE – Not covered above (Max Size 300mm x 300mm)

CHAMPION SEWING AND TOYS, MACRAME

Selected From 24/67 – 24/78 SOCIETY'S CHAMPION AWARD



OVERALL CHAMPION HANDCRAFT EXHIBIT

24/12 – 24/79 SOCIETY'S CHAMPION AWARD

NOVICE DIVISION

24/79 ANY ARTICLE – Knitting, Crochet

24/80 ANY ARTICLE – Embroidered

24/81 ANY ARTICLE – Cross Stitch – Max Size 600mm X 600mm

24/82 ANY ARTICLE – Soft Craft Not Already Covered – Max Size 600mm X 600mm



MATURE AGE 75 YEARS AND OVER, NURSING HOME RESIDENT, AGED CARE & HOSTEL

24/83 ANY ARTICLE – Soft Craft – Max Size 600mm X 600mm (Unless a Rug)

24/84 ANY ARTICLE – Knitting, Crochet

CHAMPION MATURE AGE 75 YEARS AND OVER, NURSING HOME RESIDENT, AGED CARE & HOSTEL SOCIETY'S CHAMPION AWARD



THE SHOW SOCIETY AND HANDCRAFT STEWARDS OF THE BUNDABERG SHOW WOULD LIKE TO THANK THE SPONSORS FOR THEIR GENEROSITY AND SUPPORT. THE EXHIBITORS FOR THEIR SUPPORT AND FOR TAKING THE TIME TO EXHIBIT THEIR CRAFTS, WITHOUT THESE VERY IMPORTANT PEOPLE THE SHOW WOULD NOT BE AS SUCCESSFUL AS IT IS.

THANK YOU ALL AND HOPE TO SEE YOU ALL AT THE NEXT SHOW.

IF THERE IS A SOFT CRAFT NOT MENTIONED, PLEASE CONTACT THE CHIEF STEWARD (IN WRITING). THE SCHEDULE IS REVIEWED EACH YEAR AFTER THE SHOW.



