

2020

127th

**BUNDABERG REGIONAL
SHOW**



WEDNESDAY 27th May
THURSDAY 28th May
FRIDAY 29th May

**FLOWERS,
FLORAL ART &
HORTICULTURE
SCHEDULE**



HOW TO ENTER THE SECTIONS

FILL OUT ENTRY FORMS

All entries must be:

- ❖ On Official Entry Forms
- ❖ On SEPARATE Entry Forms for Each Section (NOT CLASS)
- ❖ Fully completed
- ❖ Accompanied by Entry Fees (Refer Sections)
- ❖ Handcraft, Photography and Fruit & Vegetables have separate entry forms

ENTRIES WILL NOT BE ACCEPTED

- ❖ Without entry fees
- ❖ Over the telephone
- ❖ After closing date

POST ENTRY FORMS TO

The Secretary
PO Box 915
BUNDABERG QLD 4670

OR

DELIVER ENTRY FORMS TO

Bundaberg Show Society Office
via University Drive, Bundaberg
Enquiries – Phone 07 4155 0802

Delivery of entry forms – from 5 March - Mon-Fri 9am – 2pm

YOU WILL RECEIVE

- ❖ Class Ticket stating Section, Class and Entry No.
- ❖ Receipt

DELIVER EXHIBITS

- ❖ Accompanied by Class Ticket (ATTACHED)
(This is proof of Entry in a Class)
- ❖ To designated part of Showground by due date and time.

PLEASE REFER TO EACH SECTION FOR CLOSING, DELIVERY & COLLECTION

SECTION 14 FLOWERS

CONDITIONS OF ENTRY

1. Only stewards are permitted to separate top/bottom of exhibitors white cards. Exhibits will not be accepted with pre-torn exhibitors cards. .
2. No individual exhibit or portion of exhibit will be allowed to compete in two different classes.
3. There will be no limit of entries per person per class.
4. Exhibits must comprise the exact number as stipulated in the Schedule.
5. All exhibits must be grown by the exhibitor.
6. Entries once accepted and Class Ticket issued, may not be transferred.
7. Once in the hands of the Stewards, **no alterations or additions may be made to any exhibit during the period of the Show**, without the consent of the Chief Steward.
8. All exhibits must be arranged as directed by the Stewards of the Society.
9. All blooms will be judged on their merits.
10. No artificial material/supports will be allowed.
11. Cut flowers may consist of a single stem with foliage if any (e.g. rose, gerbera) spike, one stem with a cluster of flowers but no laterals (e.g. gladioli), stem with or without laterals (e.g. chrysanthemums).
12. In Class 14/52 stems of bunch must be secured e.g. (By rubber band) or similar.
13. Commercial growers excluded from entering classes. Display only.
14. **JUDGES DECISION IS FINAL AND WILL NOT BE ENTERED INTO**
15. Due to volume of entries and flower decay, no collection of flowers is available.
16. **Prize money/vouchers** collectable from Monday after Show from Show Office. This is no longer available during show and on collection of exhibits.

ENTRIES CLOSE – FRIDAY 22th May at 4.00pm

Exhibits to be delivered to the Main Pavilion, via University Drive
on Monday 24th May between 11am and 5.00 pm.

Exhibits collected Saturday 31st May 9.30am to 10.30am

White slips must be presented for collection

No responsibility taken for uncollected exhibits

CHIEF STEWARD Kelly Taylor Ph: 4151 5972

ENTRY FEE \$1.00, which includes G.S.T.

PRIZEMONEY 1ST \$10.00 2ND \$6.00 3RD \$4.00

If there are fewer than three (3) entries in a class, only one prize will be awarded.

ROSES

- 14/A PERFUMED ROSE – 1 only, judged on bloom AND scent
- 14/B ONE ROSE BUD any colour
- 14/C THREE ROSE BUDS TO FULL BLOOM-one cultivator (one variety)
- 14/1 RED SHADE - 1 only
- 14/2 PINK SHADE - 1 only
- 14/3 YELLOW SHADE - 1 only
- 14/4 WHITE SHADE - 1 only
- 14/5 APRICOT OR BRONZE SHADE - 1 Only
- 14/6 BI-COLOUR OR FANCY SHADE – 1 only
- 14/7 BI-COLOUR OR FANCY SHADE – 2 only
- 14/8 2 ROSES – any colour
- 14/9 3 ROSES – any colour
- 14/10 6 ROSES – each of a different colour
- 14/11 FULL BLOOM - 1 only
- 14/12 MULTIPLE HEAD – one cut



CHAMPION ROSE OF THE SHOW

MINIATURE ROSES

- 14/13 MULTIPLE HEAD - 1 cut
- 14/14 SINGLE BLOOM - 1 stem
- 14/15 SINGLE BLOOM - 3 stems
- 14/16 CONTAINER OF MINI ROSES

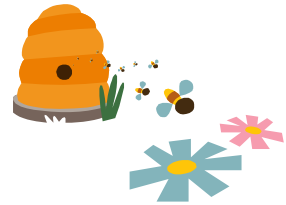
CHAMPION MINIATURE ROSE OF THE SHOW

GERBERAS-CUT FLOWERS

- 14/17 DOUBLE GERBERA - 1 only
- 14/18 DOUBLE GERBERA - 3 only, separate colours
- 14/19 DOUBLE GERBERA – 3 only, one colour
- 14/20 SINGLE GERBERA - 1 only
- 14/21 SINGLE GERBERAS - 3 only - Separate colours
- 14/22 SINGLE GERBERAS - 3 only - one colour
- 14/23 A.O.V. GERBERAS – 1 Triplex
- 14/24 A.O.V. GERBERAS – 3 Triplex , any colours
- 14/25 A.O.V. GERBERAS – 1 only
- 14/26 A.O.V. GERBERAS – 3 only separate colours
- 14/27 A.O.V. GERBERAS – 3 only, 1 colour

CHAMPION GERBERA OF THE SHOW

- 14/28 DAISY – single, 3 cuts any colour
- 14/29 MARIGOLD - 1 only up to 6cms
- 14/30 MARIGOLD - 3 only any colour, up to 6cms
- 14/31 MARIGOLD – 1 only over 6cms
- 14/32 MARIGOLD – 3 only any colour, over 6cms
- 14/33 CALENDULAS – 3 blooms, any colour
- 14/34 PHLOX – one head, any colour
- 14/35 PENTIS - collection of 6 heads, any colour
- 14/36 PANSIES – 6 only
- 14/37 PETUNIAS – 6 or more Stems
- 14/38 SNAPDRAGONS 3 stems, any colour
- 14/39 GERANIUMS WITH FOLIAGE - 3 only, 1 colour
- 14/40 GERANIUMS with foliage – 3 only, different colours
- 14/41 BULBOUS/TUBEROUS FLOWER - 1 only
- 14/42 HIBISCUS – single or double (variety only that will remain open after cut)
- 14/43 CRUCIFIX ORCHIDS – 3 only any colours
- 14/44 ANY OTHER ORCHID, including natives
- 14/45 NATIVE FLOWER – 1 only
- 14/46 NATIVE FLOWERS – 3 only – any variety
- 14/47 BOUGANVILLA – 1 stem, 60cm maximum
- 14/48 FLOWER – Any cut not mentioned above
- 14/49 FLOWERING SHRUB – Any cut



CHAMPION FLOWER EXHIBIT

PRIMARY SCHOOL CHILDREN ONLY

- 14/50 ROSE- 1 only
- 14/51 ANY OTHER CUT FLOWER
- 14/52 BUNCH OF FLOWERS - SHADES MIXED

CHAMPION CHILDREN'S ENTRY

SUPREME CHAMPION FLOWER OF THE SHOW

SECTION 15 FLORAL ART

CONDITIONS OF ENTRY

1. Refer General Rules of Competition at the back of Schedule.
2. Late entries or post entries will NOT be accepted.
3. No entry can be entered in more than one class.
4. There will be no limit of entries per person per class, provided they are eligible.
5. Once in the hands of the Stewards, no alterations or additions will be allowed without the consent of the Chief Steward.
6. Unless stipulated, all fresh flowers must be used.
7. All fresh material to be used in water or water retaining material.
8. All exhibits to be displayed on tables, in a space 1,050 mm x 750 mm (approx 3'6" x 2'6") as directed by the stewards. Tables to be provided by the Show Society. Fresh arrangements are not to exceed 60cm width.
9. Horticultural material to predominate in all exhibits unless stipulated.
10. Any suitable foliage may be used in any arrangement.
11. No distinction will be made in any class as regards type of container used.
12. Drapes, bases and accessories may be used, where required.
13. All exhibits to be the bona fide work of the exhibitor.
14. **ENTRIES CLOSE – Friday 22th May at 4.00 pm**
Exhibits to be delivered to the Main Pavilion on Monday 25th May between 11am and 6.00 pm.
15. **NO EXHIBITOR TO BE PRESENT OR ASSISTING JUDGE WHILE JUDGING IS IN PROGRESS**
16. Dried/artificial arrangements, including miniatures, previously entered in ANY show, regardless of placing's, are not eligible for re-entry.

Exhibits to be collected on Saturday 30th between 9.30am and 10.30am. Exhibitors not allowed entry until specified time, white exhibit slips must be presented.

Prize money/vouchers Will now be collected from Monday after show. NO LONGER AVAILABLE DURING SHOW OR ON DAY EXHIBITS ARE COLLECTED from the Show Office between 9am & 4pm until 7th June. Thereafter Ph 4155 0802.

CHIEF STEWARD Kelly Taylor Ph 4151 5972

ENTRY FEE Classes 15/01 to 15/13 \$4.00 which includes G.S.T.
Classes 15/14 to 15/17 \$2.00 which includes G.S.T.
Class 15/18 \$4.00 which includes G.S.T.

PRIZEMONEY 15/01 to 15/13 - 1st \$30.00 2nd \$20.00 3rd \$10.00
15/14 to 15/17 - 1st \$10.00 2nd \$6.00 3rd \$4.00
15/18 - 1st \$30.00 2nd \$20.00 3rd \$10.00

If there are fewer than three (3) entries in a class, only one prize will be awarded

NOVICE SECTION

Open to those who have not won a 1st or 2nd in any Show. Professionals are ineligible for entry.

- 15/1 FRESH ARRANGEMENT – Own Choice
- 15/2 FRESH ARRANGEMENT – “By the Sea”
- 15/3 ARTIFICIAL ARRANGEMENT – “Tropical Splendour”

CHAMPION - NOVICE SECTION

RESTRICTED SECTION

Open to any amateurs, Professionals may not enter.

- 15/4 FRESH ARRANGEMENT – Own Choice
- 15/5 FRESH ARRANGEMENT – “Making the most of One Bloom”(May include Foliage)
- 15/6 FRESH ARRANGEMENT – “Fire & Ice”
- 15/7 ARTIFICIAL ARRANGEMENT – “Diamonds are Forever”

CHAMPION - RESTRICTED SECTION

OPEN SECTION

Open to any person including professionals

- 15/8 FRESH ARRANGEMENT – Flowers and Bark
- 15/9 FRESH ARRANGEMENT – Split level design
- 15/10 FRESH ARRANGEMENT – “Peaceful Pastels”
- 15/11 ARTIFICIAL ARRANGEMENT – “Glamming it up”

CHAMPION - OPEN ARRANGEMENT

MINIATURE ARRANGEMENTS

Not to exceed 7.5cm in height and width. Dried and/or artificial arrangements. Arrangements previously entered in any show, regardless of placing or not, are not permitted to be re-entered. Miniatures are photographed each year to abide with rule.

- 15/12 FRESH ARRANGEMENT
- 15/13 DRIED AND/OR ARTIFICIAL ARRANGEMENT

CHAMPION - MINIATURE ARRANGEMENT

JUVENILE DIVISION

All placing's in the Children's Division will receive Show Society ribbon

Primary School Children UNDER 11 years

- 15/14 FRESH ARRANGEMENT “Fairy Garden” (To be made on any water retaining tray, no bigger than 30cm x30cm) Must include at least one fairy and some use of greenery and flowers)
- 15/15 FRESH ARRANGEMENT – “Harry Potter” (Must include use of fresh flowers and foliage)

CHAMPION - PRIMARY SCHOOL ENTRY

Children 11 years - up to 16 years

- 15/16 FRESH ARRANGEMENT – Own Choice (no accessories allowed)
- 15/17 FRESH ARRANGEMENT – “Glitter and Glam” (Must include fresh flowers and foliage)

CHAMPION – JUVENILE DIVISION

FRESH and/or ARTIFICIAL ARRANGEMENT

Open to any person including Professionals

- 15/18 “Work in Symmetry”

SUPREME CHAMPION FLORAL ART EXHIBIT

SECTION 16 HORTICULTURE CONDITIONS OF ENTRY

CHIEF STEWARD Kelly Taylor Ph.: 4151 5972

ENTRY FEE \$2.00 per entry, includes G.S.T.

PRIZEMONEY 1ST \$10.00 2ND \$6.00 3RD \$4.00

1. **Only stewards are permitted to separate top/bottom of exhibitors white cards. Exhibits will not be accepted with pre-torn exhibitors cards. .**
2. Exhibits must comprise the exact number as stipulated in the schedule.
3. No entry can be entered in more than one class.
4. There will be no limit of entries per person per class.
5. All exhibits must be the bona fide work of the exhibitor for at least 30 days, at time of entry.
6. Where off shoots are not matured enough to be potted out, the plants shall be judged as one. Varieties that are produced on wire like stolons, shall be judged as one.
7. Plants should be clean and disease free. No polish or oil on any plants.
8. No pot to exceed **35cm (14")** No Basket to exceed **35cm (14")**.
9. ***JUDGES DECISIONIS FINAL AND WILL NOT BE ENTERED INTO***
10. **Stewards/Judges are not responsible for reclassing and moving plants entered into wrong classes or sizes. These exhibits risk disqualification. Plants including cactus gardens, etc, that are over rule sizes will not be benched, please check before bringing in. Entries are non-refundable for exhibits failing criteria or not being presented.**
11. **ENTRIES CLOSE – Friday 22th May at 4.00 pm**
12. If unsure of which class to enter a single particular plant, please do not enter it prior to closing. Bring it in on the Monday (unentered), and stewards will enter correctly. Normal entry fee of \$2 will be payable at this time. Refer to rule 10.
13. The Show Society reserve the right to deduct incorrect fees paid from any prize money awarded or ask for payment on arrival. Exhibitors leaving entry form fees columns blank, (and this has not been corrected at office at time of entry) may be asked to produce an office receipt as proof.
14. **PRIZE MONEY/VOUCHERS AVAILABLE FROM SHOW OFFICE MONDAY AFTER SHOW (This will no longer be available during the show or when exhibition are collected on Saturday.)**

Exhibits to be delivered to the Main Pavilion, via University Drive on Monday 25th May between 11.00am and 5.00 pm.

Exhibits collected on Saturday 30th May between 9.30 and 10.30am. No collections until specified times, white exhibit slips must be presented.

NO responsibility taken for uncollected exhibits

If fewer than three (3) entries in a class only 1 prize will be given.

CLASS DETAILS

FERNS

- 16/1 MAIDEN HAIR FERN – Pot up to 35cm
- 16/2 FERN - ANY OTHER – Basket up to 35cm
- 16/3 HARE'S FOOT FERN
- 16/4 FERN - ANY OTHER – Pot up to 35cm
- 16/5 CROW'S NEST FERN
- 16/6 NEPHROLEPIS – Pot up to 35cm



CHAMPION FERN

FLOWERING PLANTS

- 16/7 ZYGOCACTUS - Any in flower - In hanging basket 20cm
- 16/8 ZYGOCACTUS - Any in flower - In hanging basket 20cm – 35cm
- 16/9 ZYGOCACTUS - Any in flower – in pot up to 35cm
- 16/10 AFRICAN VIOLET – In flower - Any single
- 16/11 AFRICAN VIOLET – In flower - Any double
- 16/12 ANTHIRIUM
- 16/13 BEGONIA - In bloom
- 16/14 BOUGAINVILLEA – in bloom
- 16/15 IVY GERANIUM – in bloom- may be trellised
- 16/16 GERANIUM – any other, in bloom
- 16/17 ANY OTHER FLOWERING PLANT – not mentioned
- 16/18 FUSCHIA

CHAMPION FLOWERING PLANT

CACTUS

- 16/19 CACTUS - Any in pot 10cm
- 16/20 CACTUS - Any in pot 10cm – 20cm
- 16/21 CACTUS - Any in pot 20cm – 35cm
- 16/22 CACTUS GARDEN – Any

CHAMPION CACTUS EXHIBIT

SUCCULENTS

- 16/23 CACTUS & SUCCULENT GARDEN - Any
- 16/24 SUCCULENT GARDEN - Any
- 16/25 SUCCULENT - Any - In pot up to 10 cm
- 16/26 SUCCULENT - Any - In pot over 10 up to 20cm
- 16/27 SUCCULENT - Any - In pot 20cm to 35cm
- 16/27a ADENIUM (Desert Rose) – any pot up to 35cm

CHAMPION SUCCULENT

BROMELIAD

- 16/28 AECHMEA
- 16/29 NEOREGELIA
- 16/30 VRIESIA
- 16/31 CRYPTANTHUS
- 16/32 ANY OTHER VARIETY NOT MENTIONED
- 16/33 FOLIAGE PLANT IN HANGING BASKET–Any Variety
- 16/34 FOLIAGE PLANT – Any variety not mentioned - Potted

- 16/35 PEPEROMIA - Any variety
- 16/36 PHILODENDROM
- 16/37 DIEFFENBACHIA - Any
- 16/38 CARDWELL LILY – Any
- 16/39 LILY – Any other not mentioned above
- 16/40 ALOCASIA
- 16/41 CORDYLINE - Any
- 16/42 CALATHEA
- 16/43 CALADIUM - Any
- 16/44 HERBS IN A SMALL POT (to contain as least 3 distinct varieties)suitable for Kitchen sill
- 16/45 ASPARAGUS PLANT - Any variety
- 16/46 CLIMBING OR TRAILING PLANT - Any variety not mentioned
- 16/47 CROTON - Any variety
- 16/48 DRACAENA - Any variety
- 16/49 PALM - Any variety
- 16/50 AGLAONEMA
- 16/51 ANY 3 FOLIAGE POTTED PLANTS – separate pots
- 16/52 ARALIA - Any variety
- 16/53 COLEUS
- 16/54 BONSAI – Any one plant - up to 40cm
- 16/55 ONE FOLIAGE PLANT FOR TABLE CENTRE – under 30cms high
- 16/56 HERB POTTED - any

CHAMPION FOLIAGE PLANT

CHILDRENS SECTION

Ages under 10 years

- 16/57 FLOWERING PLANT - Other than orchid
- 16/58 FOLIAGE PLANT - Any
- 16/59 COLEUS - Any - In pot
- 16/60 SUCCULENT – any in pot, up to 15cms
- 16/61 CACTUS – any in pot, up to 15cms

Ages 11 years – 16 years

- 16/62 FLOWERING PLANT - Other than orchid
- 16/63 FOLIAGE PLANT - Any
- 16/64 COLEUS - Any - In pot
- 16/65 SUCCULENT – any in pot, up to 15cms
- 16/66 CACTUS – any in pot, up to 15cms
- 16/67 BROMELIAD



CHAMPION CHILDREN'S ENTRY

ORCHIDS

- 16/68 CATTLEYA ALLIANCE
- 16/69 DENDROBIUM
- 16/70 ONCIDIUM ALLIANCE
- 16/71 VANDA ALLIANCE
- 16/72 ANY OTHER VARIETY
- 16/73 SPECIES ORCHID



CHAMPION ORCHID OF SHOW

SUPREME CHAMPION PLANT OF THE SHOW

